

22Miles

Detailed Feature List



Table of Contents

01. About Us

04. Digital Signage Solutions

02. Publisher Pro
Widgets & Property Settings

05. Touch Layout Designer

03. Web Editor

06. Wayfinding

01. About Us

We are the Industry Leader in Experiential and Visualized Communications

22Miles provides comprehensive technology solutions for digital connectivity, visual communications, media management, and adaptive multi-point interactive experiences. Powered by an immersive, easy-to-use content management software, the process of creating, managing, and enhancing a facility's designed content has never been as simple. 22Miles creates a unique experience for agile environments, interactive applications, streamlining events, and visually impactful informational content for venues, mix-use, corporate centers, or large campuses. It is customizable from experiential digital signage, interactive 3D wayfinding, safe contact-less interaction technology, large array video walls, room booking capabilities, and native or HTML mobile apps, allowing creators to build for any organizational storyboard and journey.

Our Mission

22MILES is committed to total customer satisfaction. We deliver best- of-breed technology solutions designed to assist our clients/partners in building, expanding, and optimizing their communication and user-engaging channels. Our goal is to provide these solutions in the most cost-effective manner possible, while providing the highest quality products in the industry.

Who We Serve

22Miles creates a unique experience for agile environments, interactive applications, directories, and visually impactful informational content for healthcare, education, venues, corporate workspaces, experience centers, transportation hubs, government, smart cities, retail, or large campuses.

What We Do

3D Wayfinding (*Global Leader*)

Digital Signage

Room Booking & Space Management

Experience Center Digital Solutions

Directories

AR Plug-in

Hoteling/Hotdesking

Virtual Receptionist (*WebEx, Teams, and more*)

Visitor Management & Access Control

Video Walls & Touch Screen Walls

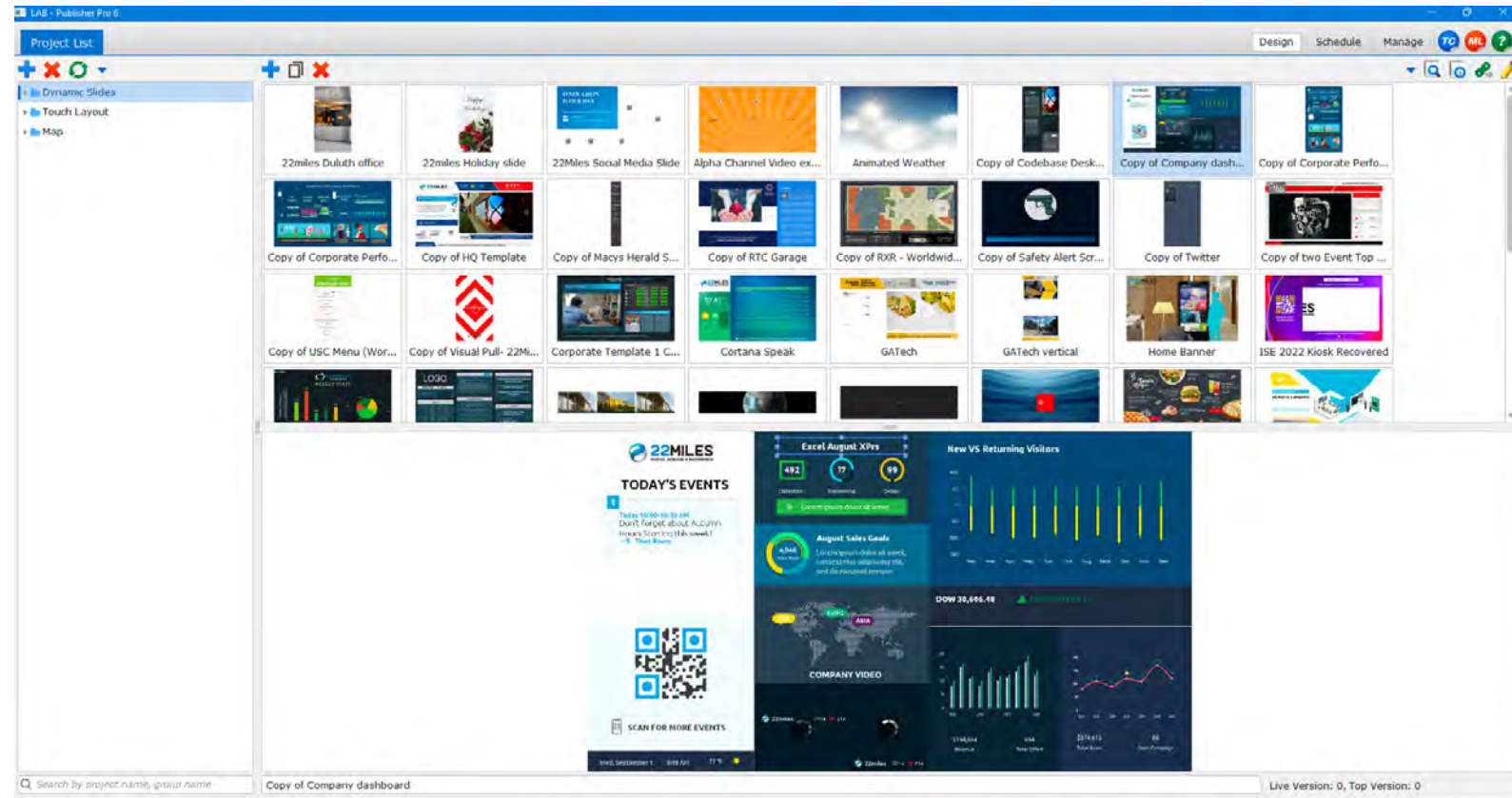
Mobile Experiences – Web API & SDK

Desktop Notification Suite

02.

Publisher Pro

Widgets & Property Settings

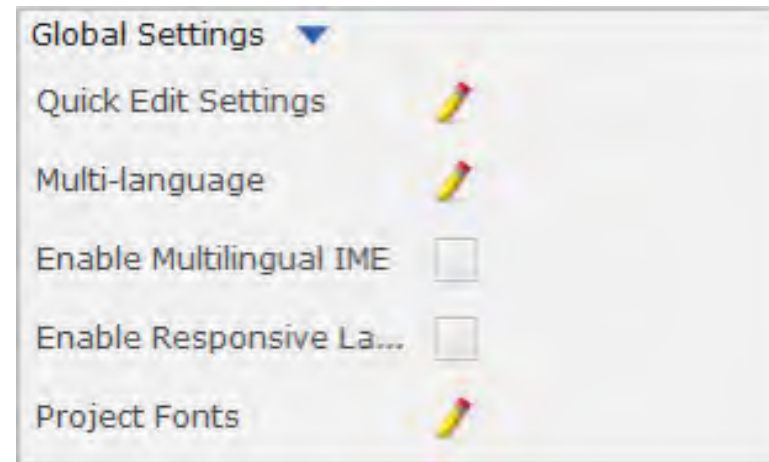


What is Publisher Pro?

Full Design Software Suite enables users to create and customize dynamic content with simple drag and drop widgets of all kinds. Free Design allows users to be as creative as they want, but we also offer a rich catalog Template Center for grab-and-go options.

*Please review Digital Signage Solutions, Touch Layout Designer and Wayfinding for more information on our Publisher Pro Suite

Widgets & Property Settings -

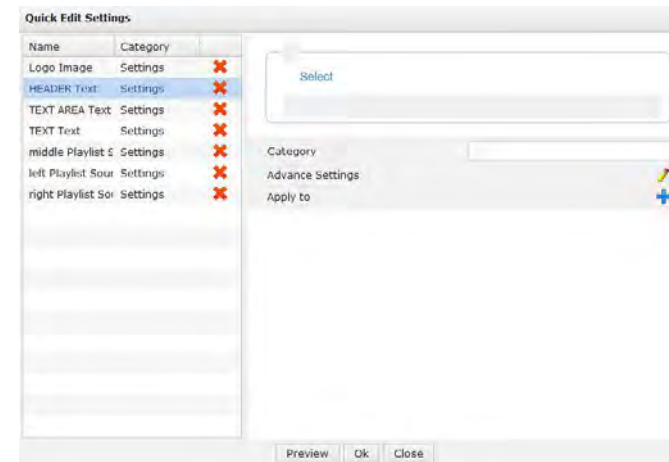


Non Touch:

- Create Dynamic slides with styling tools and free built-in widget options.

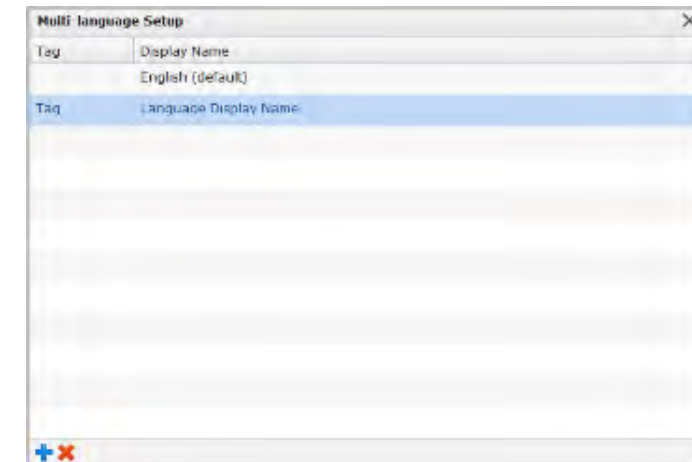
Global Settings:

- Initial project settings are available in the property menu to assist in setting the main design aspects and branding to get your project going.



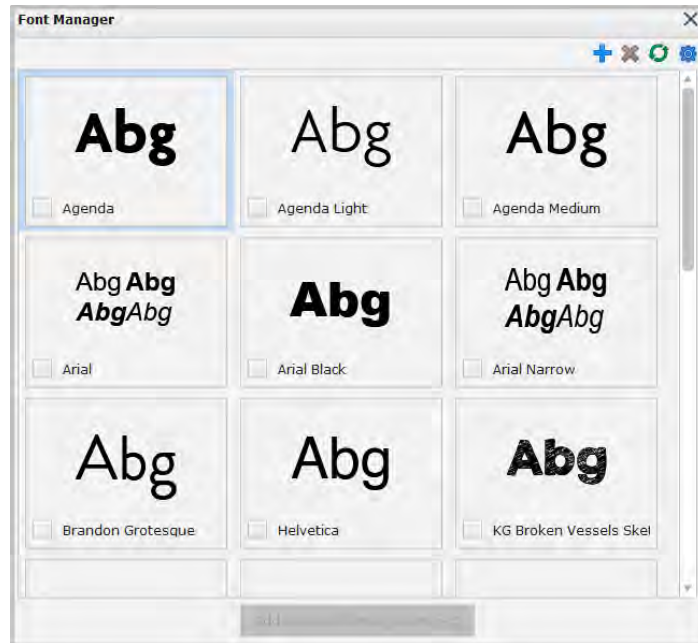
Quick Edit:

- settings for adding a component to the list of editable options in the Web Editor.



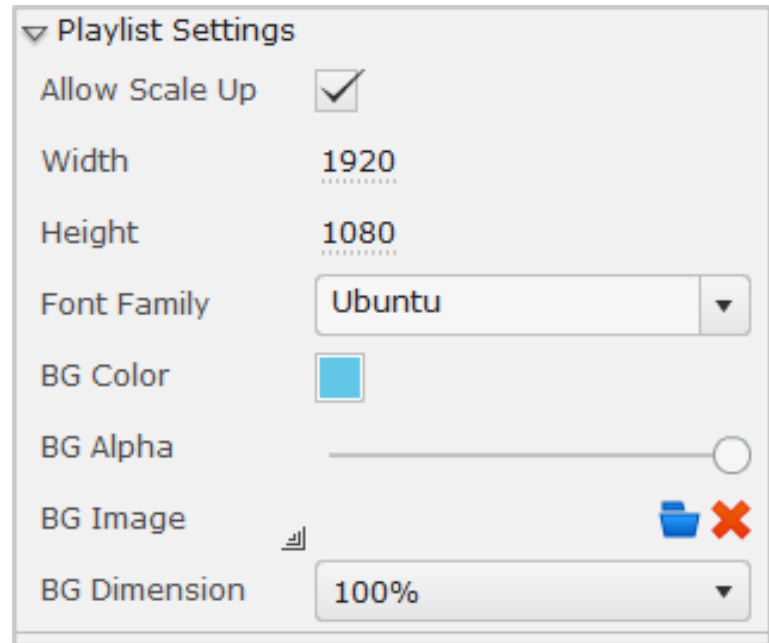
Multi Language:

- Settings for adding additional languages to your project.



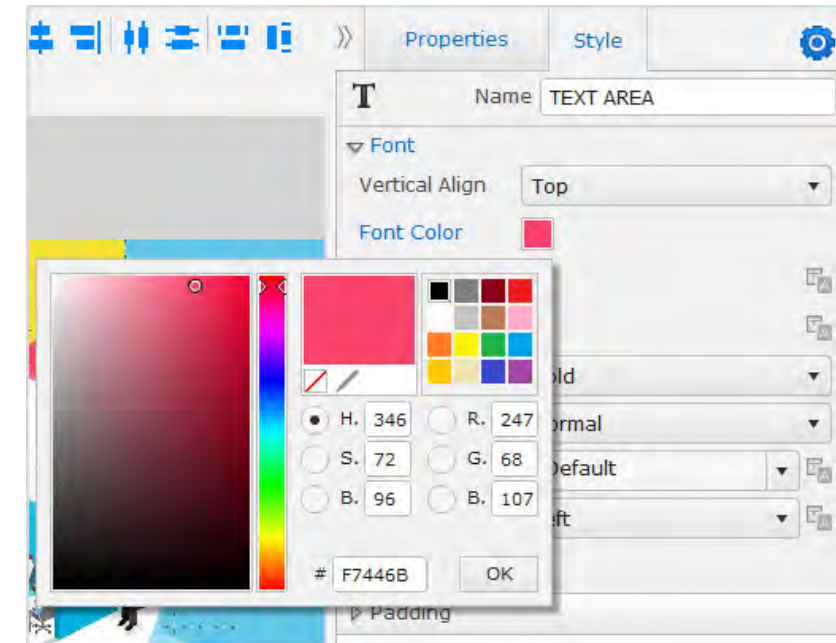
Adding Font:

- Add font to your project with our font management tool.



Additional Global Project Settings:

- Designate the Width and Height according to the display that the project will be linked to.
- Designate the Font family from the list of available fonts.
- Set a color or image to use as the project background.



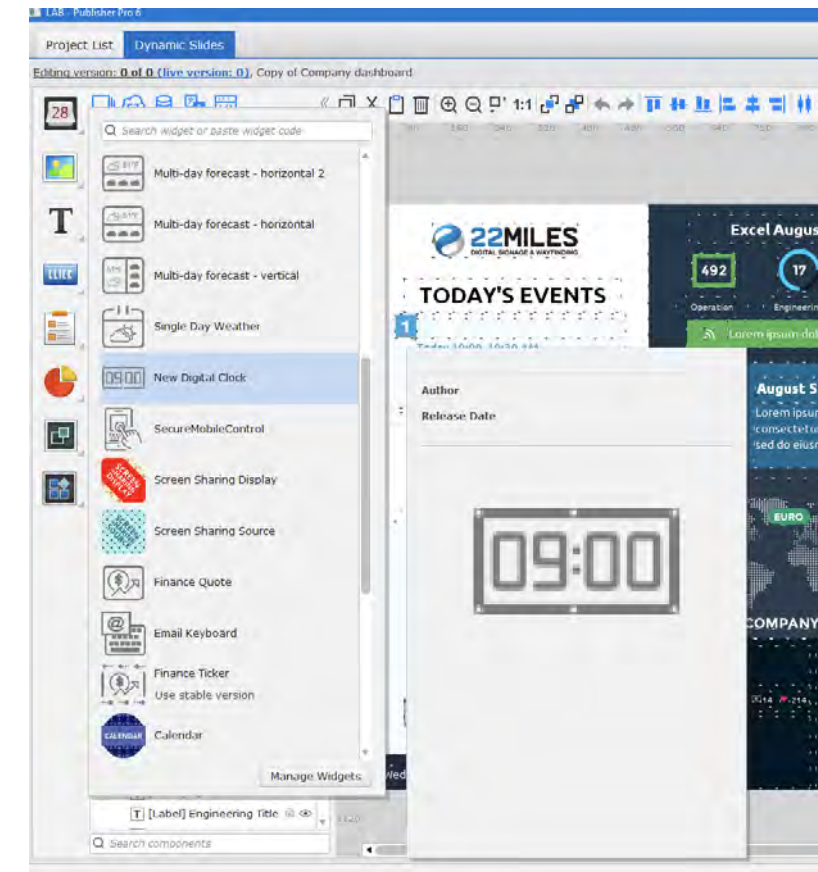
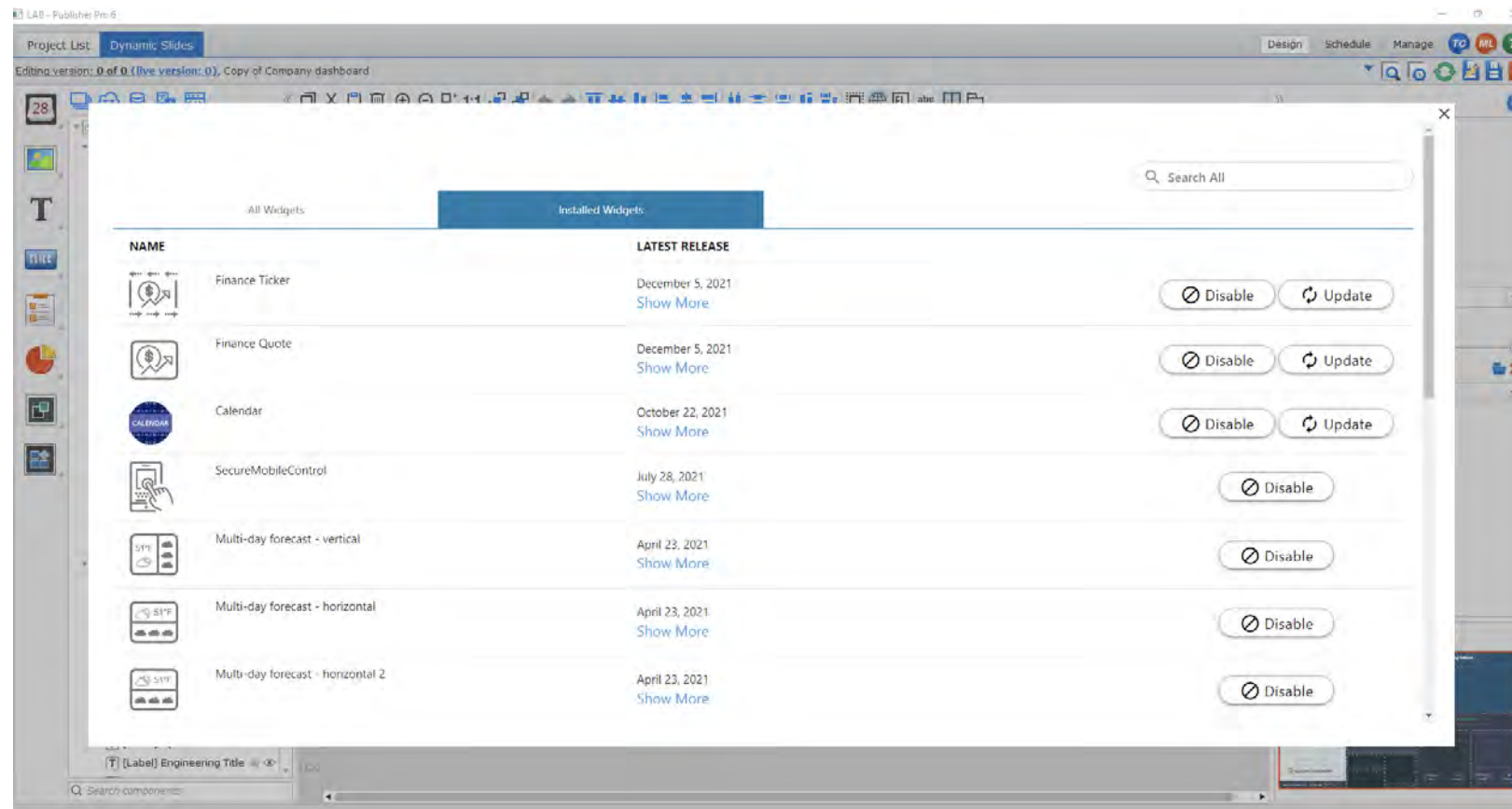
Widget Styling Options:

- Each component added to the project can be styled as needed.
- Designate Font, Padding Borders, Background, and Visual Filters for each one. We even offer the paint-brush tool for quickly grabbing colors with one



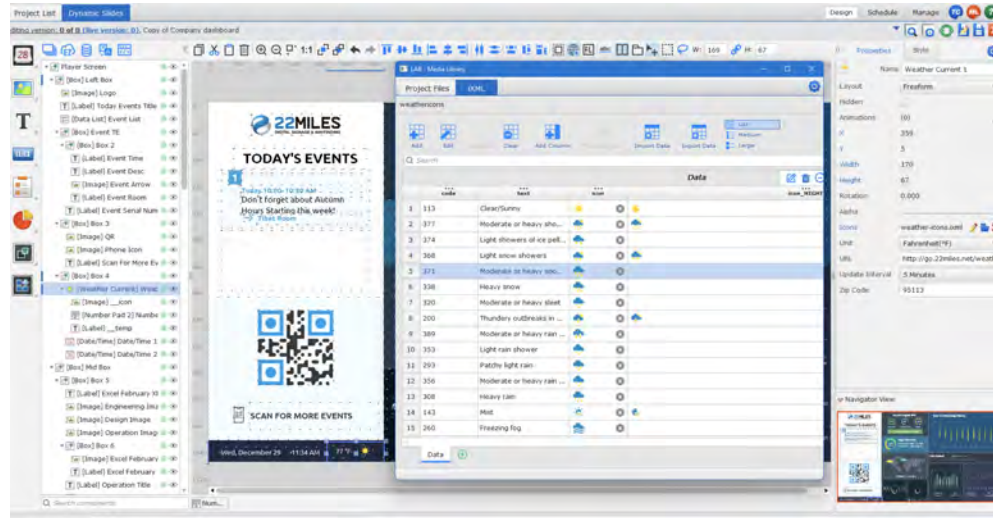
Hotkeys will also assist with position and alignments of components within the section but also provide a variety of other tools.

- Copy, Cut, Paste, and delete.
- Zoom In/Zoom Out
- Autofit
- Move to back/front
- Alignment tools
- Auto Load HTML content
- Auto Load Flash content
- Spell check
- Selection tools
- Aspect ratios



Ready Made Application Widgets:

- Select and Drag-and-drop from preconfigured and predesigned widgets to add to your templates.
- Includes weather, Date Designs, Clocks, Finance Tickers, News SMC, Voice, Booking features, keyboards and more widget designs.
- Install for any design options with all property settings ready to go.



Weather:

- Weather widget provided for free with software portal.
- Customize the Icons, Text, and Colors to show the desired weather information in any style you choose
- Simple settings with zip code entry to pull weather forecast for any location.
- Current Day and Multi-Day Forecast options to show up full seven days of weather information.
- Multi-Day can be set to a Horizontal or Vertical Layout.
- Multi-Day has the option to scroll automatically.

Drag and Drop Widgets:

- We offer a wide variety of drag and drop widgets to ensure you can show dynamic and informative content with ease.

Date/Time:

- Customizable format to show the desired date and time format to match your branding and styling desires.
- Simple Time Zone Adjustment selection tool gives users a drop-down menu of all time zones.
- Time format settings can be adjusted, i.e., 12/6/21, January 6, 2021, or Monday, December 6.

News:

- News widget provided for free with software portal.
- Supports any accessible RSS feed by using a URL Address
- Horizontal or Vertical Scroll options
- Text size, speed, color, and spacing can be changed within style settings

Media Zones:

- Media Zones can support various file types and have full scheduling functionality on each added item.
- Image formats can be PNG, JPEG, or PDF (Win Player). These can be uploaded individually or put into Playlists.
- PPT can be natively uploaded with built-in effects supported. (Win Player)
- Stream Video easily by using the Stream URL -UDP Links.
- Webpages can be i-framed using URLs. Available with multiple browser options to ensure accurate playback. (Chrome, IE, Native)
- Various transition and animation options provide a dynamic and eye-appealing experience.
- Screensaver triggers can be set to show Media Zones during “No event” times automatically. Use this free time to deliver advertisements and different media playback.
- All projects support multiple Media Zones in all sizes for a mix and match feel.

Data Lists:

- 22 Miles data list can integrate with multiple sources such as icalendar, CSV, XML, JSON, SQL, SOAP, LDAP, RSS, HTML, and the internal software catalog.
- Standard 3rd party feeds, and open APIs are natively supported to trigger content and live data feeds. (O365, Exchange, G - - Suite, Amadeus, Infor, Ungerboeck, Everbridge, Kastle, Sharepoint, Tableau, and more)
- These sources can be parsed into different elements such as date and time, room location, name, and other column settings and formula sets.
- Using a “Template Box,” a customized design for the data list in color, font size and styling, and other accents like separation lines.
- Adjust property settings for data integration with Images, videos, website links, and audio clips.
- Flexibility to integrate with Google Sheets.
- Single-Sign-On and Active Directory integrations are available.



Playlist:

- It can be a collection of images or videos that can be put in a data list or media zone. The playlist itself can be scheduled within a media zone.
- Updating this content can be done through Publisher Pro or the Web Manager.

Simple List:

- It is a data list designed for specific simplified data/media triggers—commonly used for automatic scrolling image lists.

Data Source:

- This feature is used if multiple datasets are pulled from the same source.

iXML:

- iXML Is a proprietary 22Miles data format that has a similar look to a Microsoft Excel sheet. It seamlessly integrates with all areas of design and filtering.
- Information can be imported from Excel or other data sources, and it can be exported to a .csv or clipboard.

Pie Charts:

- Create informational graphs in the form of pie charts, bar charts, line charts or area charts.
- Leverage existing KPI system such as Tableau or PowerBI.

RSS:

- 22Miles RSS widget allows the user to create custom titles and descriptions that form an RSS feed rather than build it through a third-party source. The settings ensure that it seamlessly integrates with the rest of the project.

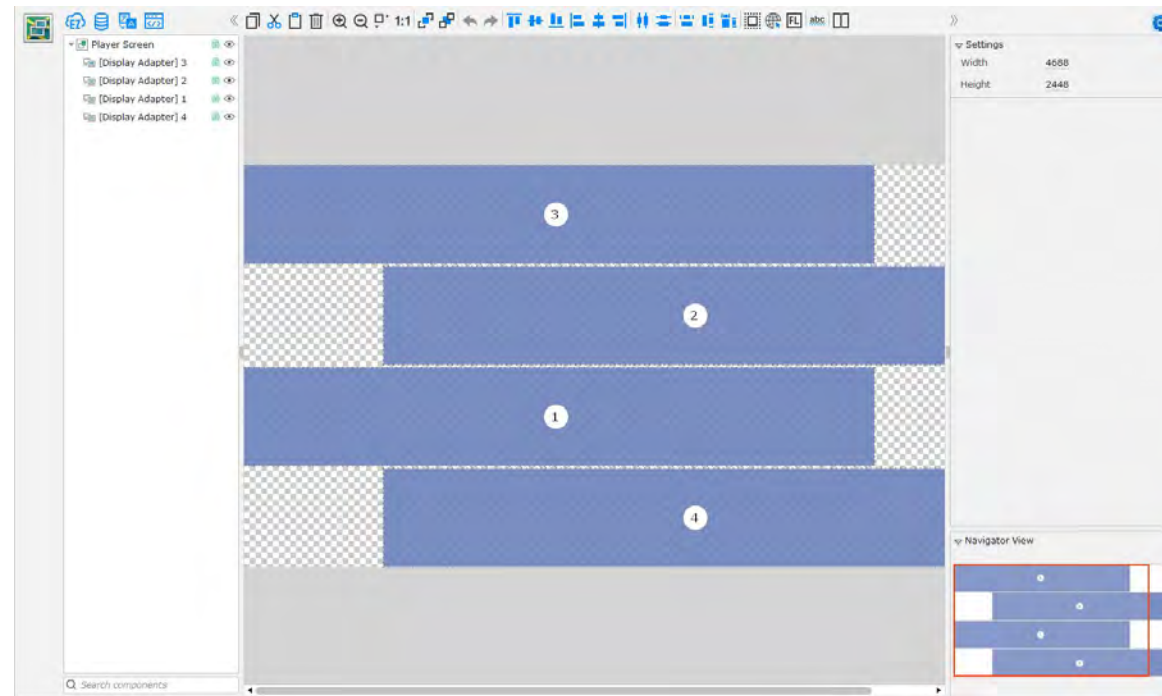
Cross Publishing:

Convert any digital signage playlist or immersive design experience to your video conference, huddle room or hybrid solutions.

- Supports Cisco WebEx, Teams, Mersive Pods, and Zoom Or Desktop/Web solutions.
- Simple Integration through a URL/API integration- Able to display through any chat, video conference, or website experience for staff and any audience for office or remote solutions.



Before -



After -



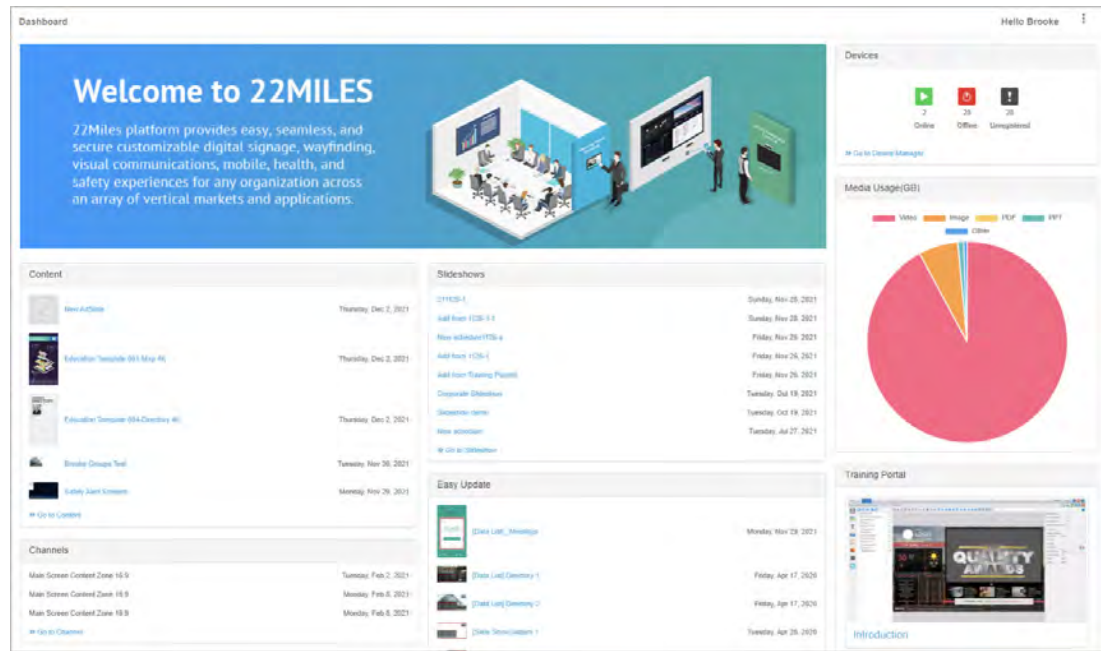
Mix Tiles:

-22Miles Mix Tile “Flex Wall” mapping tool allows users to create a unique array of video wall projects. Design a multiscreen, mixed display, mixed size, and aspect ratios. The settings ensure that it seamlessly integrates with the rest of the project.

-Drag and drop the displays into position.

-Supports a mix of dynamic or multi-touch projects.

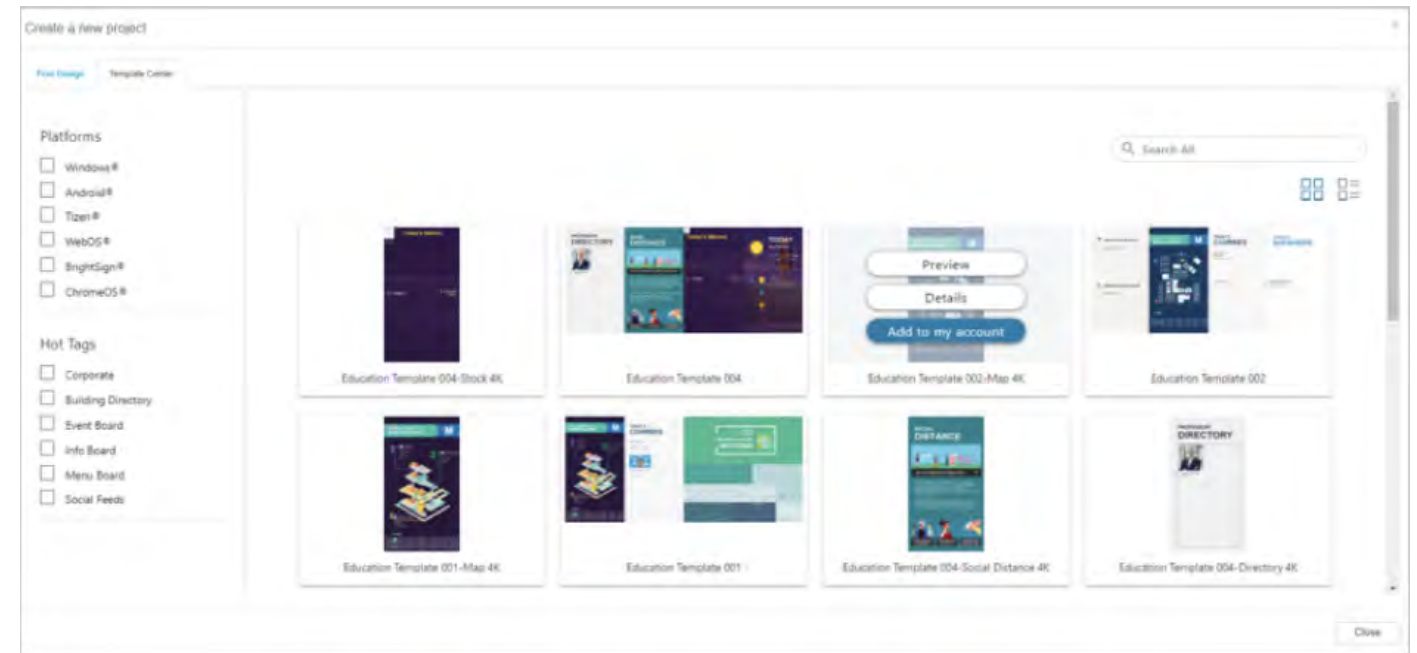
03. Web Editor



Web Editor - Dashboard

The 22Miles Web Editor Dashboard provides a quick and straightforward view of Players and Projects.

- Project Overview
- Available Workflows
- Media Usage
- Player Health
- Access to the Training Portal



Template Library

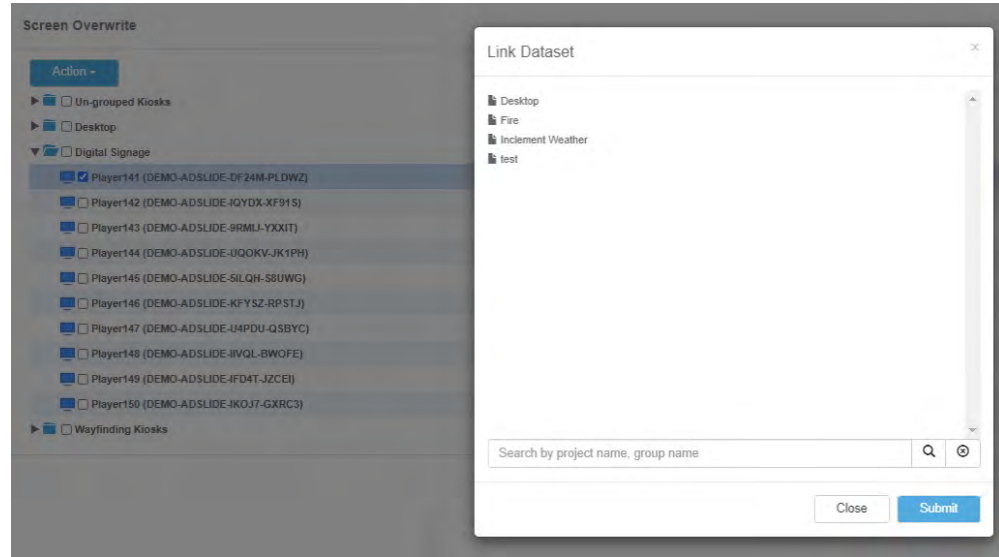
- Choose from a library with 100's of predesigned Templates provided by our design team at 22Miles.
- Scroll through and select the Templates you wish you add to your account.
- Use the Quick Edit tool to use the Templates as is and update Backgrounds, Images, Data, and Text to match your branding.
- Use the Pro Edit tool to edit or add additional - Widgets to your Template for an even more customized feel.

Administrative Controls:

- Designate user access and privileges to control what Projects, Media Files, workflow, and Players each user group can use.
- The wide variety of customizable workflows to ensure ease of use for all different skill levels of users.
- View logs to track user logins and activity.
- The approval process can designate which users must approve their content before it displays.

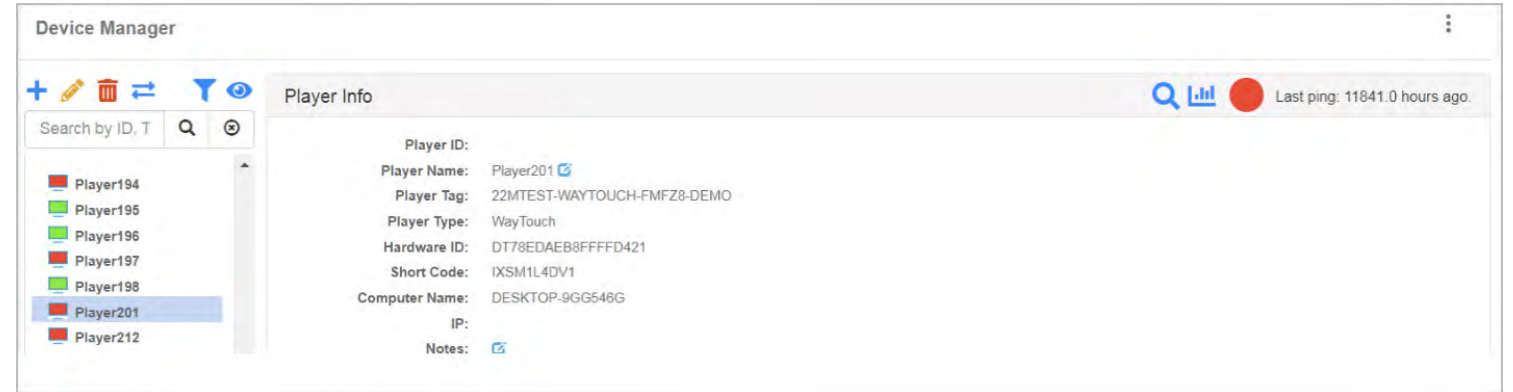
Customizable Workflow Options:

- Easy Update is the most straightforward workflow we provide. This allows users to quickly add media to a playlist within a project zone or update data list information to directories and menu items. This workflow will be a broad push and update content on all associated players.
- Channel, like Easy Update in its simplicity of updating Media to a playlist, gives users the ability to update content on selected players or groups of players.
- Quick Edit is a fully customizable editing tool that allows administrators to grant access to any chosen component within a project. This can be backgrounds, text, images, data, weather zip codes, news sources, etc.
- Pro Edit is for complete project editing and creation. This allows users to edit the layout and components of an existing project or build a new dynamic non-touch project. Move where elements are located and add new features from our available widgets.



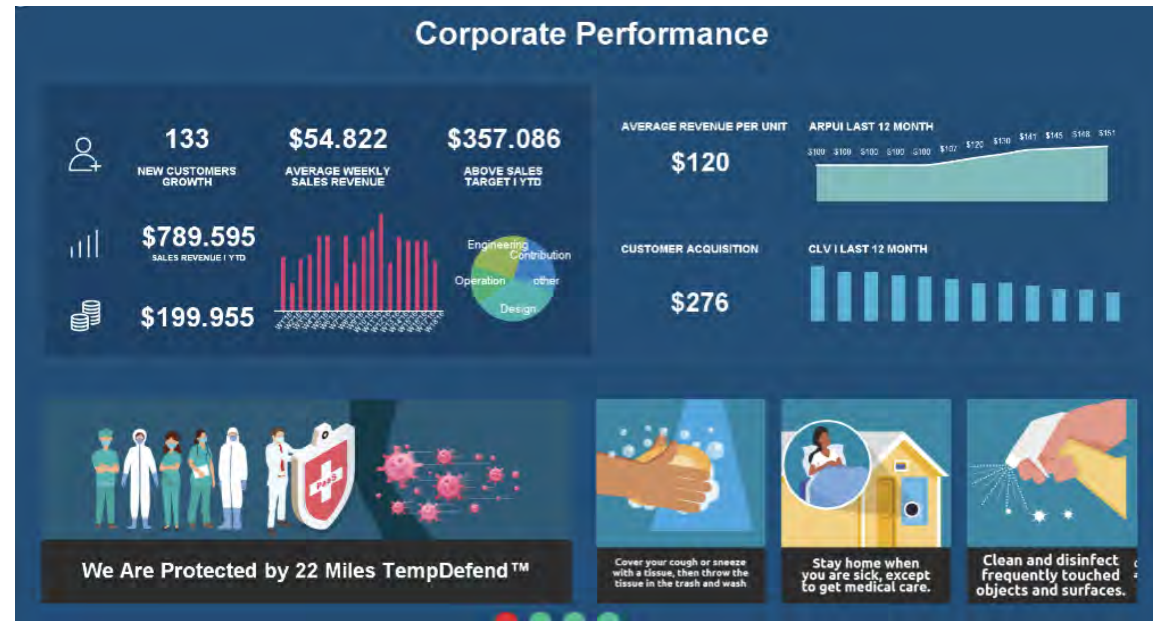
Screen Overwrite:

- Quickly log in a overwrite what is currently displaying on the displays.
- Great for Emergency Messaging.



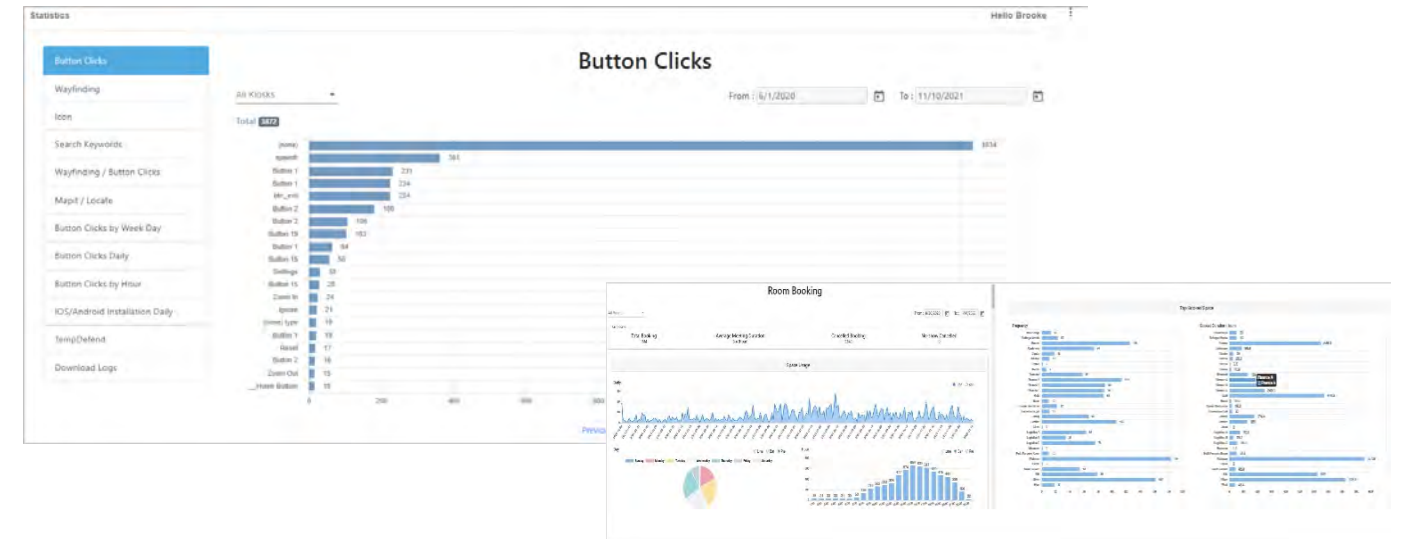
Device Manager:

- A quick view of overall player health.
- See the list of all Players, which project is linked to each player, and if the player is online or offline.
- View remote screen capture or a live preview of your players.



Desktop Notification:

- Install the 22Miles desktop notification tool on employees' desktops.
- Keep your employees updated with company news and announcements by pushing messages directly to their desktops.
- This content can be interactive.



Statistics:

- Statistics will show you how your displays are commonly being used, which can assist with knowing where things could use adjustments and enhancements,
- Wayfinding Stats will show what floors and rooms have been searched.
- Button clicks will show when and how often buttons are being used. This gives a good view of the week, day, or even hour activity levels.
- Room Booking, Space Utilization Stats available for total usage, average durations, canceled booking, no-shows, top booked spaces, booking per individual, etc.

TRAINING PORTAL

How can we help you

Welcome to the 22Miles Training Portal. Here you will find videos and user manuals to help you build digital signage using Publisher Pro

Use the Search Bar or scroll down to get started.



Publisher Pro

- Non-Touch Projects (Adslide)
- Touch Projects (Layout)
- Wayfinding Projects (Map)

Web Editor

- Web Editor (Administrators)
- Web Editor (Editors)

Alternative Signage

- TempDefend
- HTML

Tools & More

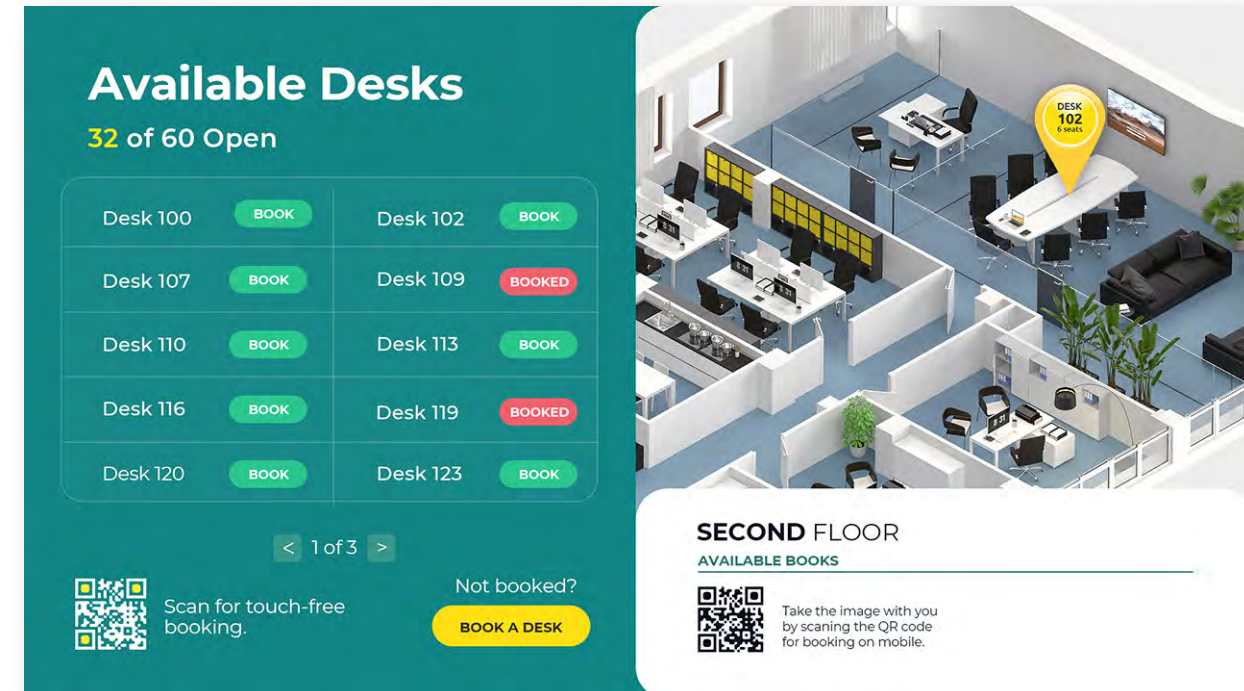
- Advanced Features
- Tips & Tricks

Classroom

- Basic Lessons
- Advanced Lessons

Training Portal is available for added resources, manuals, and training videos.

04. Digital Signage Solutions



Room Booking:

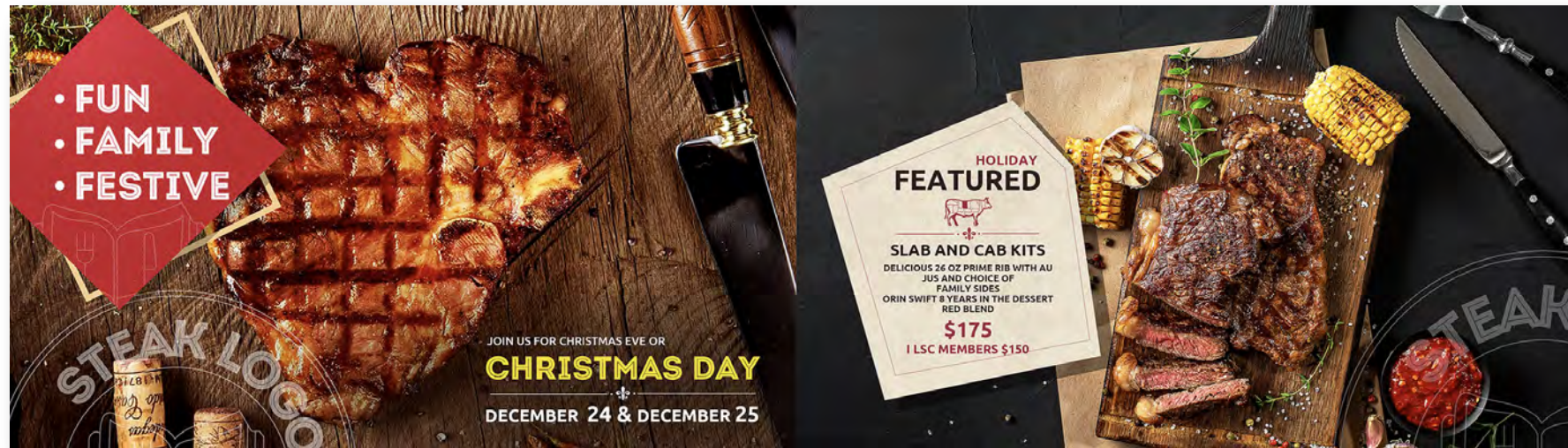
- Book and Manage meeting rooms, offices, and other spaces from a tablet or mobile device.
- See a list of vacant rooms and filter by capacity, available technology, etc.
- Contactless booking to ensure the safety of your employees and visitors.
- Swipe NFC tags with employee HID badges or others for quick check-in.
- Search for meetings and see the status for each.
- Incorporate the 22Miles wayfinding solution to show occupancy and availability with best routes and hoteling/hotdesking highlights.

ROOM NAME	MEETING NAME	HOLDER	TIME
3rd Fl Conf Room	General Session	M. Lorraine	9:30AM-12:00PM
Champagne Room	General Session	Caryn Kozlowski	12:00PM-2:00PM
Club Board Room	Breakout	M. Lorraine	9:00AM-12:00PM
Eleanor Room	Lunch Buffet	Wanda Rauch	2:30PM-4:00PM
Hutchinson Room	Card Tours	James Lomick	4:30 PM-6:30PM
Lexington Room	Breakfast Buffet	Carol Roberts	1:30 PM-3:00PM

*LEGEND: ● Available for Reservation ● Unavailable

Meeting Room Boards:

- Design a customized meeting room sign showing current and upcoming events.
- Add group logos, slideshow content when no events, video playback, arrows, current and following event info, and more.
- Manage events manually using our iXML data source or integration with any existing calendar, i.e., Delphi, Envision, Google, or Outlook
- You can incorporate media slideshows to highlight meeting company information and advertisements with your meeting information.



1910 N. OLA AVE. SUITE 107, TAMPA FL 33602
BUTCHERANDBBQ.COM

LUNCH AND DINNER	
SMOKED	PULLED PORK SANDWICH \$9
	12 HOUR SMOKED GRASS-FED BEEF \$13 <small>Butcher's selection of brisket or bottom round</small>
	COMBO \$11 <small>(Pork and 12-Hour Smoked Grass-Fed Beef)</small>
	BURNT ENDS \$13 <small>(When Available)</small>
	KICKIN WANGS \$12 <small>Pork brisket, smoked and fried chicken, Alabama white</small>
SAUCES	
<small>All Sauces and Rubs Are Gluten Free</small>	
<small>K.C. SWEET - Molasses, sweet and smoky</small>	
<small>CAROLINA GOLD - Mustard based, sweet and tangy</small>	
<small>TEXAS HEAT - Spicy, smoky and tangy</small>	
<small>ALABAMA WHITE - Mayo base, tangy and tangy</small>	
SAMMIES & STUFF	GRASS-FED BURGER \$10 <small>Petate roll, American cheese, butter, lettuce, heirloom tomato, Bull Pickles</small>
	KOREAN PHILLY \$11 <small>American roll, smoked and glazed roast beef or seasonal chicken, candied yams, American cheese, gochujang cheese sauce</small>
	NACHOS \$11 <small>House-made queso, tomatoes, cabbage, cowboy candy, sour cream, BBQ crema (Choice of pulled pork, strip beef or chicken)</small>
	REDNECK REUBEN \$11 <small>Pretzels, sauerkraut, pickles, American cheese, 1000 Island, toasted rye</small>
	HONEY HOT CHICKEN SANDWICH \$9 <small>Fried chicken breast, honey hot sauce, lettuce, tomato, garlic aioli, toasted butter bread</small>
	LOCKED N LOADED \$9 <small>Fried potato chunks, pulled pork, KC sweet sauce, sour cream, cowboy candy, cheddar</small>
	LUNCH BREAK (Monday - Friday) 11:00 am to 3:00 pm \$10 <small>FRIES AND YOUR CHOICE OF ICE TEA, LEMONADE, OR KOOL AID</small>
	FIXINS \$3.5 <small>CUCUMBER SALAD, POTATO SALAD, BAKED BEANS, FRENCH FRIES, MAC AND CHEESE</small>
	THE KIDS FIX \$6 <small>(Each One Side)</small>
	BURGER, GRILLED CHEESE OR CHICKEN NUGGETS

© = Gluten - free or can be prepared gluten free.

Menu Boards:

- Create dynamic Menu Boards to display across multiple displays for a Video Wall experience.
- Integrate with a POS system to allow direct ordering from the kitchen or bar.
- Add a QR code for browsing from your device, "Carry2Mobile."
- Schedule content with Publisher Pro or Web Manager to show specials or other menu items throughout the day.
- Add videos for an eye-catching experience.



Interactive Video Walls:

- Create a single dynamic project or a multi-window layout across the entire video wall.
- Use our Flex Wall tool to create projects for displays of mixed sizes and orientations for a unique experience.
- It supports all the drag and drop widgets to create an immersive experiential solution. Easily incorporate Images, Videos, edge device integrations, live feeds, and data triggers.
- Utilize 3rd party integrations and API for best-in-class automation and filtered content.

05. Touch Layout Designer

Touch Layout Designer

In addition to all the available non-Touch options, broaden your reach into an interactive project to truly engage your audience.

Multi-Page Design:

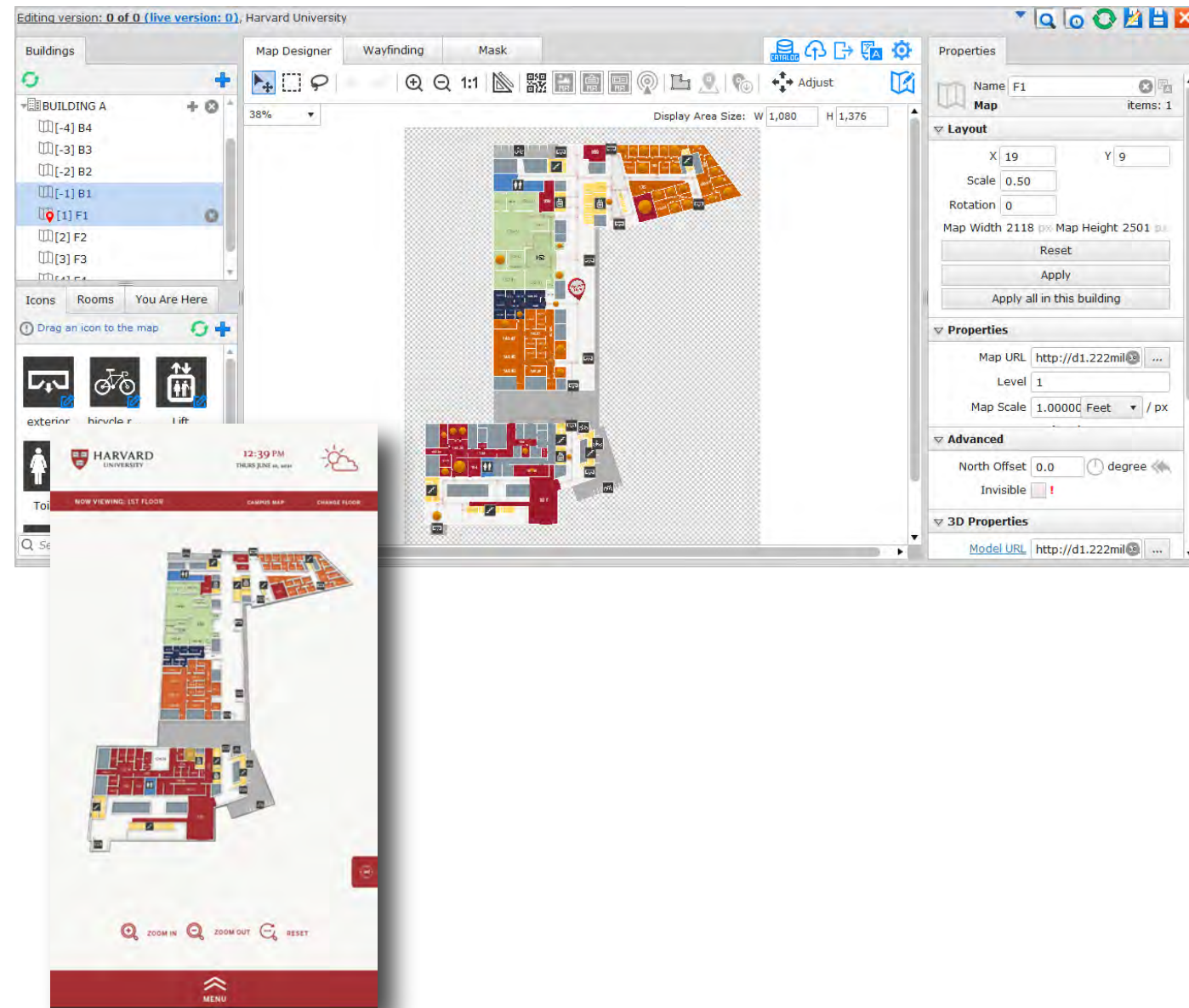
- With the use of stacked boxes full of content, the amount of information is limitless.
- Stacked pages and boxes can be set using action buttons. These can be filled with text or images to suit any multi-touch UI/UX design needs.
- It supports large resolution touch video walls that can be canvas designed in any orientation or interactive experience.

Action Buttons:

- The drag & Drop button widget can be customized with images, colors, and text.
- Touch action options: Zoom In/Out, refresh, navigate to pages in your layout, back button, phone call setup, close a page, etc.
- Action buttons can be used for various Windows functions, such as close the program, COM commands, open URL, etc.

06. Wayfinding

Before

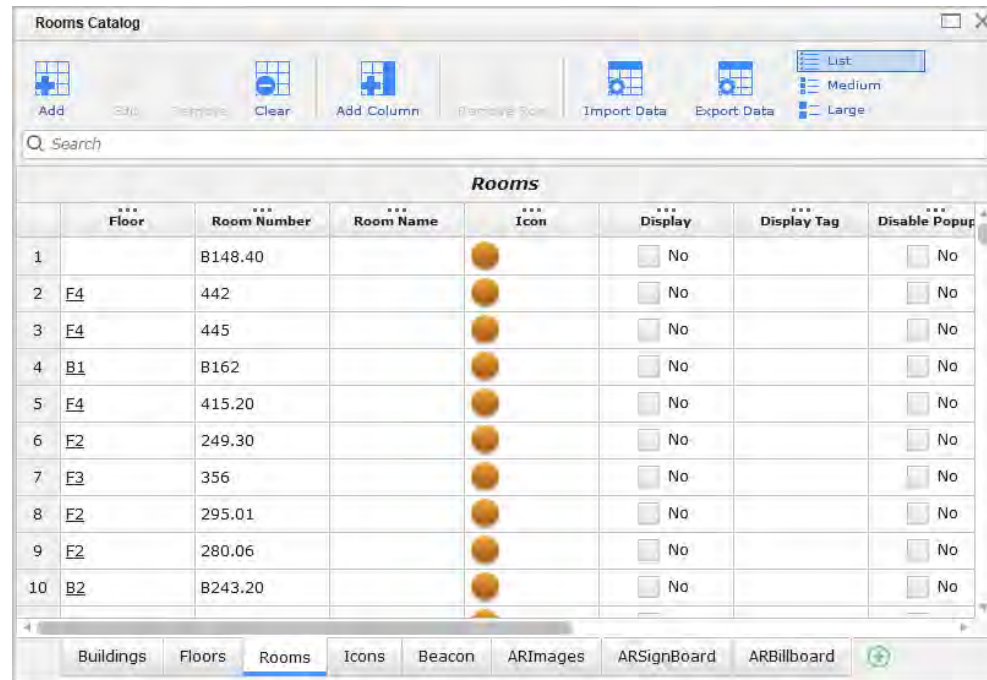


After

Wayfinding:

The 22Miles Map Designer Tool and module is used to simplify your mapping projects to build, import 3D models, edit rooms and nodes, and manage routes.

- Manage and edit your custom maps built by the 22Miles team or drag-and-drop your PNG and SVG floor plans.
- Property settings and pick-and-click controls provide a powerful Map Design tool with ease of use with 3D layers and editable floor plans.
- Manage Floor plans through our built-in catalog that is easily editable and allows for import/export listings.
- Publish Mobile Apps with one click, piggyback the same map, animations, and pathways.

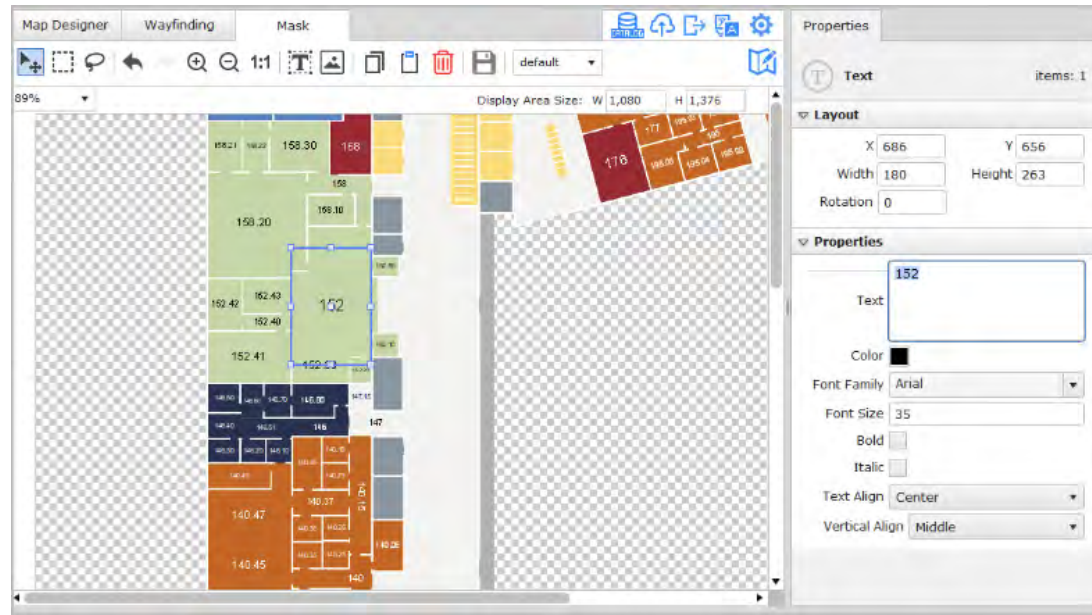


Map Files:

- 2D maps are built using a PNG image of your floor plan.
- 3D maps have an additional SVG file superimposed on top of the PNG leveraging the 22Miles proprietary 3D Engine.
- Adding the 3D Map file will show all 3D images (furniture, glass, doors, etc.)

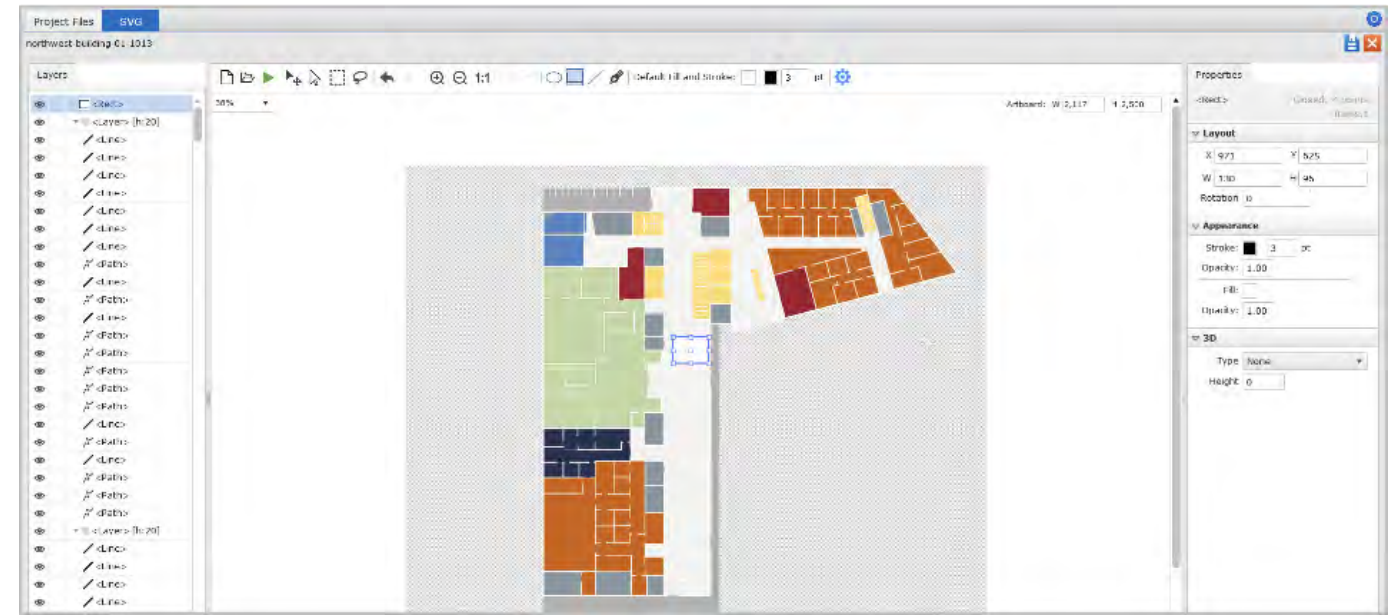
Drag and Drop Icons & Rooms:

- Create and manage a catalog of floors, rooms, icons, and other assets used on the map design.
- Drag & drop for adding things from the catalog to the desired location on the map.
- We provide standard icons (Restrooms, Stairs, Elevators, etc.), but users can import customized Icons.



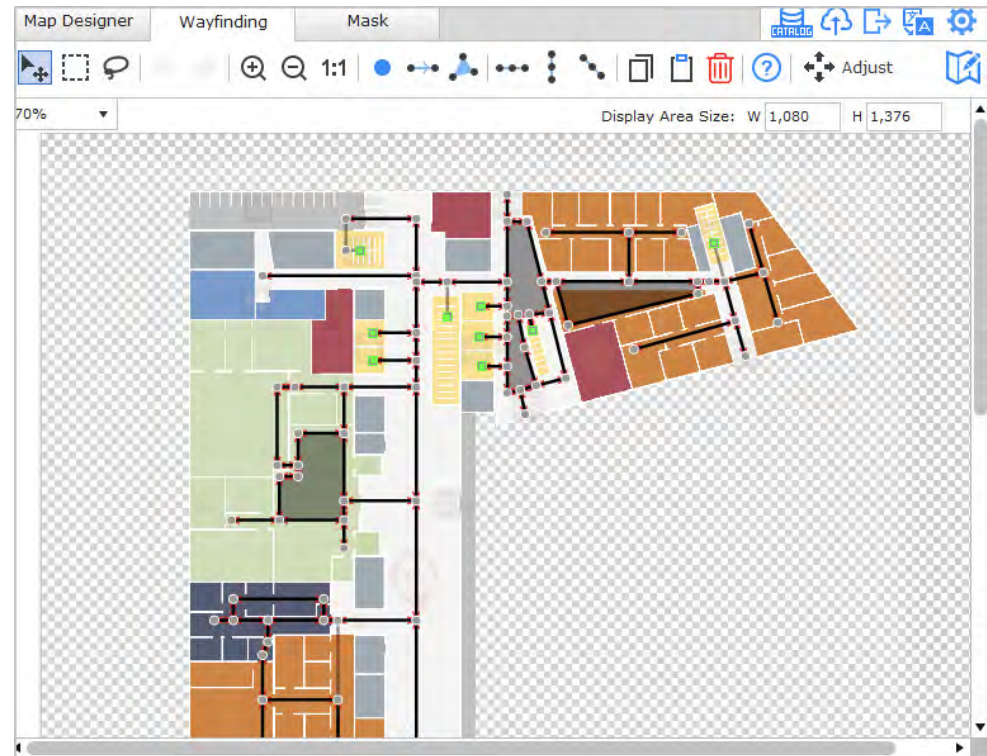
Label Mask:

- Create and manage a layer of visible room labels and logos viewed on the map.



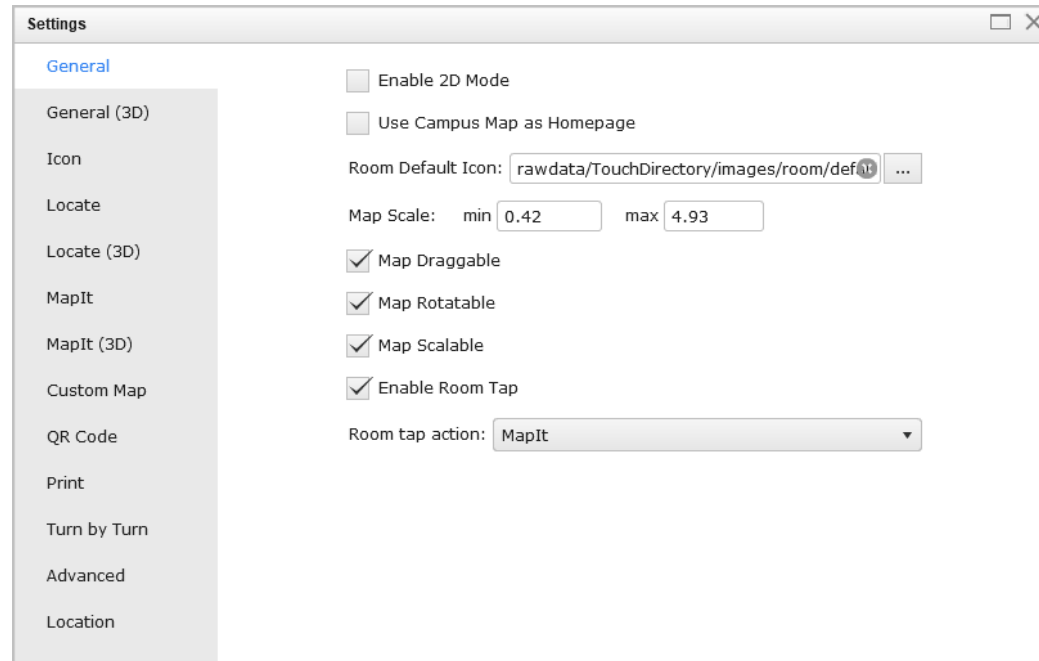
SVG Editor – Map Floor Editor:

- Edit your SVG file directly from the 22Miles map module with our proprietary Map Floor Editor.
- Novice-level design flexibility, no graphic design professionals needed.
- Create new rooms and easily change room colors.
- Create new walls or modify existing ones.
- Adjust wall or room height.



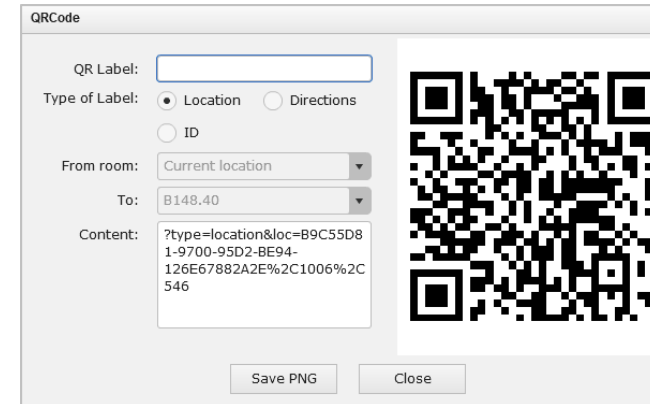
Wayfinding Pathways:

- Create and manage Wayfinding Pathways using our unique Wayfinding Tool.
- Drop Nodes (Wayfinding Points) along all navigation routes.
- Connect the nodes to create point A-B interactive pathways. The system leverages the proprietary 22Miles map engine with a smart pathway algorithm.
- Control Traffic with one-way navigation settings.
- Scheduled events, detours, route closings of elevators, stairs, etc., whenever needed.
- Manage wheelchair routes and accessibility options for - ADA compliance to ease everyone with the same wayfinding experience.



Advanced Map Settings:

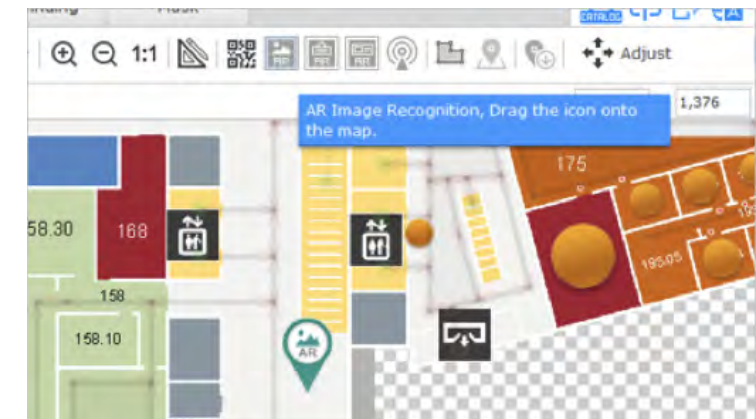
- Advanced Map settings will allow you to control Icon, mapping, turn-by-turn options, and much more.
- Adjust Icon Scale and flashing behavior.
- Change the line color and animations on your wayfinding pathways.
- Set printing options when using the print feature.
- Manage your QR Code label for locations, directions, and URLs. Save as a PNG to leverage the directional experience on displays or even stickers.
- And much more.



QR Codes:

- QR code can be added to the map as a scannable location to get wayfinding directions or simply an ID in a mobile project.
- When used as a location, scanning the QR code will zoom in to its location on the map.
- When used as wayfinding, scanning the QR code will start the wayfinding route from the current location to a preset destination.

Augmented Reality (AR):



22Miles AR brings a new immersive experience to an existing environment. Creating an engaging, real-time wayfinding adventure.

- 22M provides different image recognition options for end-users in a mobile project. It intuitively improves the accuracy over time.
- AR image recognition locates the user's current position on the mobile project map and any surrounding relevant images, icons, or text.
- AR Billboard will display a virtual billboard on the app when the end-user arrives at a location.

Indoor Positioning- Beacons/BLE Support:

Beacon UUID:

Beacon Scanning Interval:

MSE Server:

MSE request time interval:

- 22M provides the capability to integrate with third-party beacons/Bluetooth positioning services such as Cisco DNA, Zebra, Gimbal, HP Aruba, etc.
- 22M mobile app automatically tracks a user's current location and reflects on the mobile map. All wayfinding will start from the current location and without the need to select a starting point manually.
- All location data is calculated with the help of a third-party positioning server and integrated with the coordinates in the 22Miles map through an X/Y Source.

Thank You!

